

ORDINANCE NO. 2020-11

AN ORDINANCE OF THE BOROUGH OF BAY HEAD, COUNTY OF OCEAN, STATE OF NEW JERSEY, AMENDING AND SUPPLEMENTING ARTICLE II OF CHAPTER 147 OF THE BOROUGH CODE OF THE BOROUGH OF BAY HEAD, ENTITLED "LAND USE"

NOW, THEREFORE, BE IT ORDAINED, by the governing body of the Borough of Bay Head, County of Ocean, State of New Jersey, as follows:

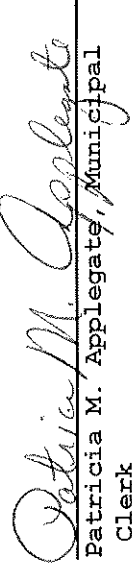
**SECTION 1.** The Municipal Code of the Borough of Bay Head is hereby amended and supplemented so as to amend Chapter 147, entitled "Land Use" so as amend Appendix B so as to delete zoning map sheets 6-8, and replace with new zoning map sheets 6-8, attached hereto as Schedule A, which shall be incorporated into to Appendix B to Chapter 147 of the Municipal Code entitled "Borough of Bay Head Land Use Appendix B, Oceanfront Properties – Front Yard Setback Map."

**SECTION 2.** All ordinances or parts of ordinances inconsistent herewith are hereby repealed.

**SECTION 3.** If any section, subsection, sentence, clause, phrase or portion of this ordinance is for any reason held to be invalid or unconstitutional by a court of competent jurisdiction, such portion shall be deemed a separate, distinct and independent provision, and such holding shall not affect the validity of the remaining portions hereof.

**SECTION 4.** This ordinance shall take effect after second reading and publication as required by law.

ATTEST:

  
Patricia M. Applegate, Municipal Clerk

APPROVED:

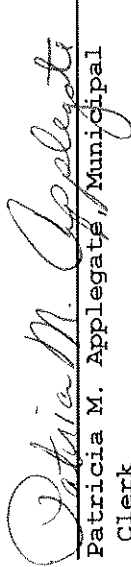
  
William W. Curtis, Mayor

Introduced on First Reading: July 6, 2020

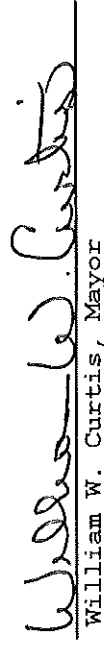
Introduced on Second Reading: September 14, 2020

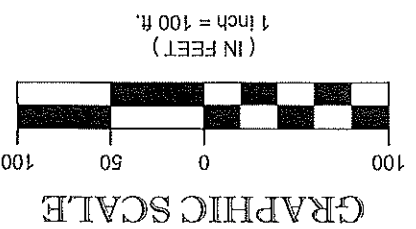
Approved on Second Reading: September 14, 2020

ATTEST:

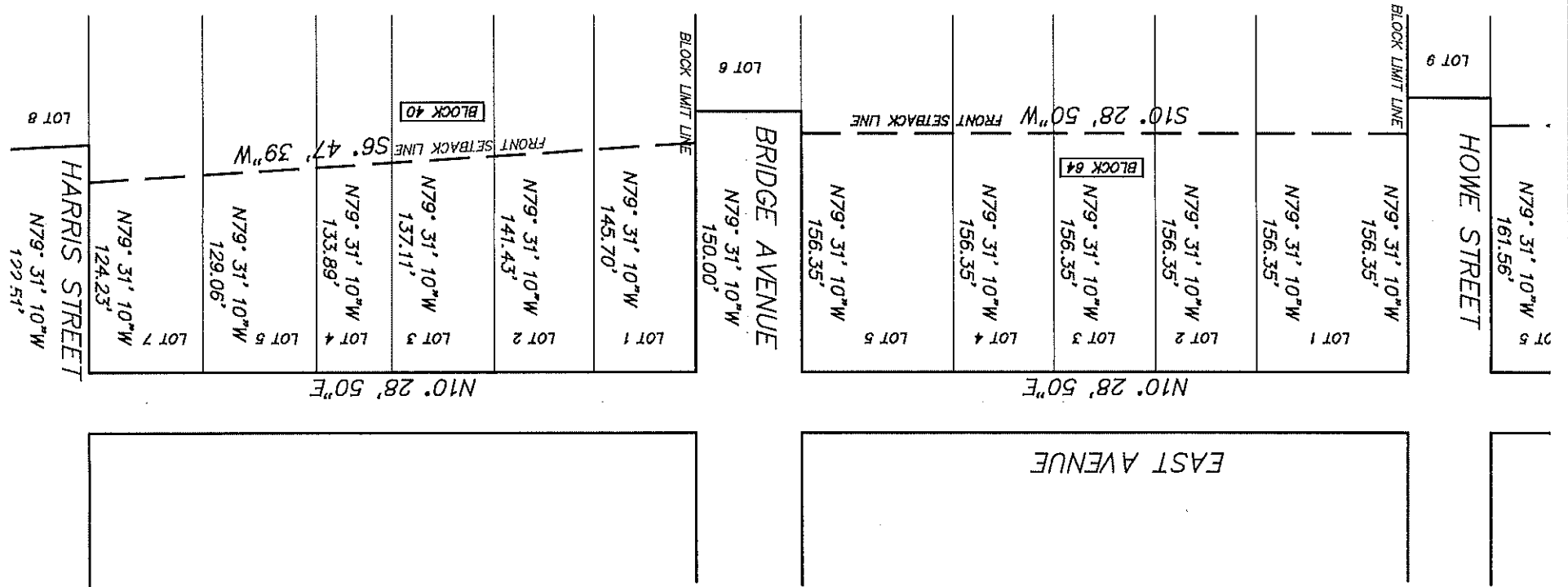
  
Patricia M. Applegate, Municipal Clerk

APPROVED:

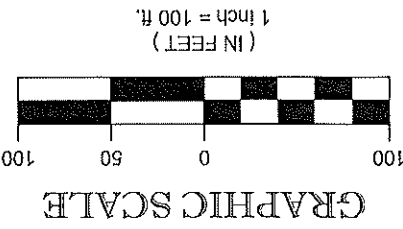
  
William W. Curtis, Mayor



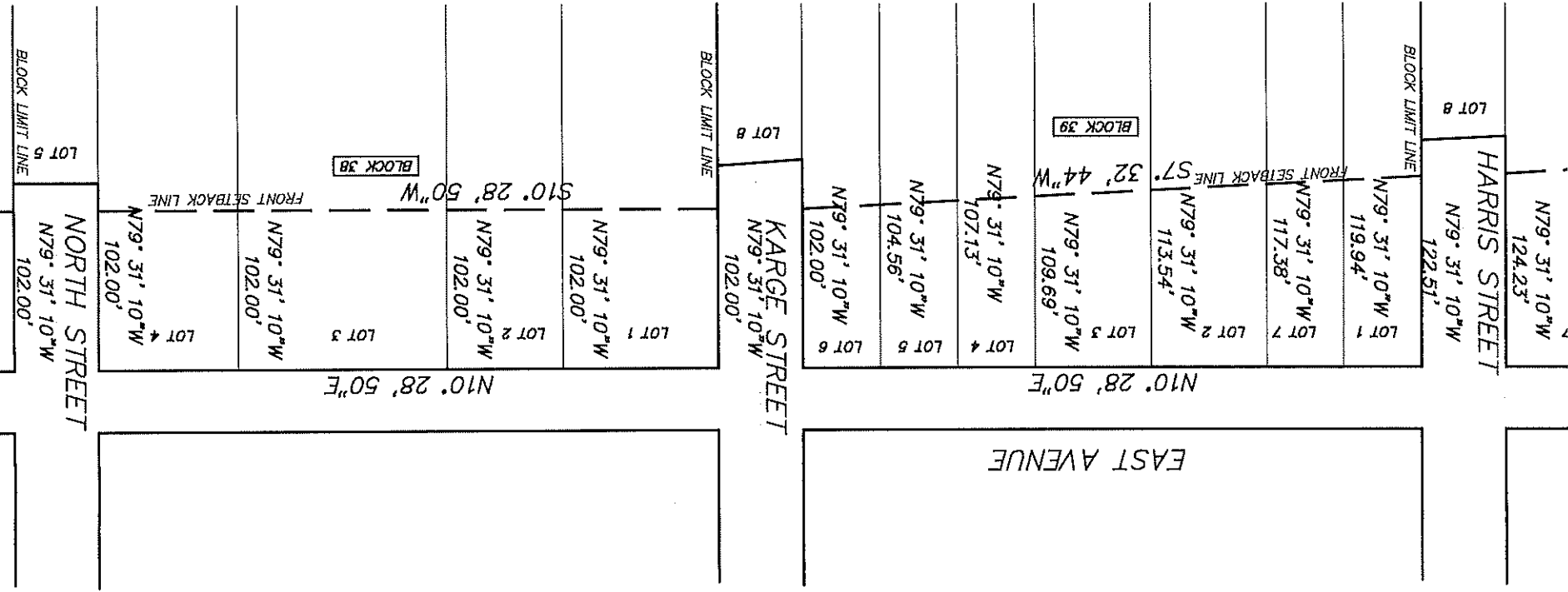
1	6/29/20	REV. PER BAY HEAD COMMENTS	JDC	AUTH
NO.	DATE	DESCRIPTION OF REVISION	BY	AUTH
BOROUGH OF BAY HEAD LAND USE APPENDIX B OCEANFRONT PROPERTIES - FRONT YARD SETBACK MAP				
CHECKED BY	JDC	GALG. BY	JDC	DRAWN BY
SCALE	1"=100'	DATE	1/20/20	PROJECT NO.
19130.00			6	8



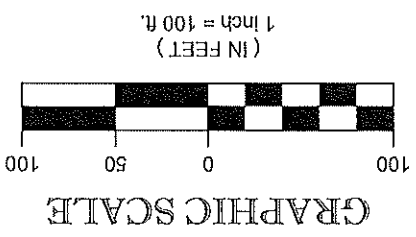
N.J.S.P.C.S. MAD83



1	6/29/20	REV. PER BAY HEAD COMMENTS	JDC	AUTH
NO.	DATE	DESCRIPTION OF REVISION	BY	AUTH
BOROUGH OF BAY HEAD LAND USE APPENDIX B OCEANFRONT PROPERTIES - FRONT YARD SETBACK MAP				
CHECKED BY		CALC. BY	DRAWN BY	SCALE
JDC		JDC	JDC	1"=100'
DATE		PROJECT NO.	DWG NO.	
1/20/20		19130.00	7	
			8	



*N.J.S.P.C.S. NAD83*

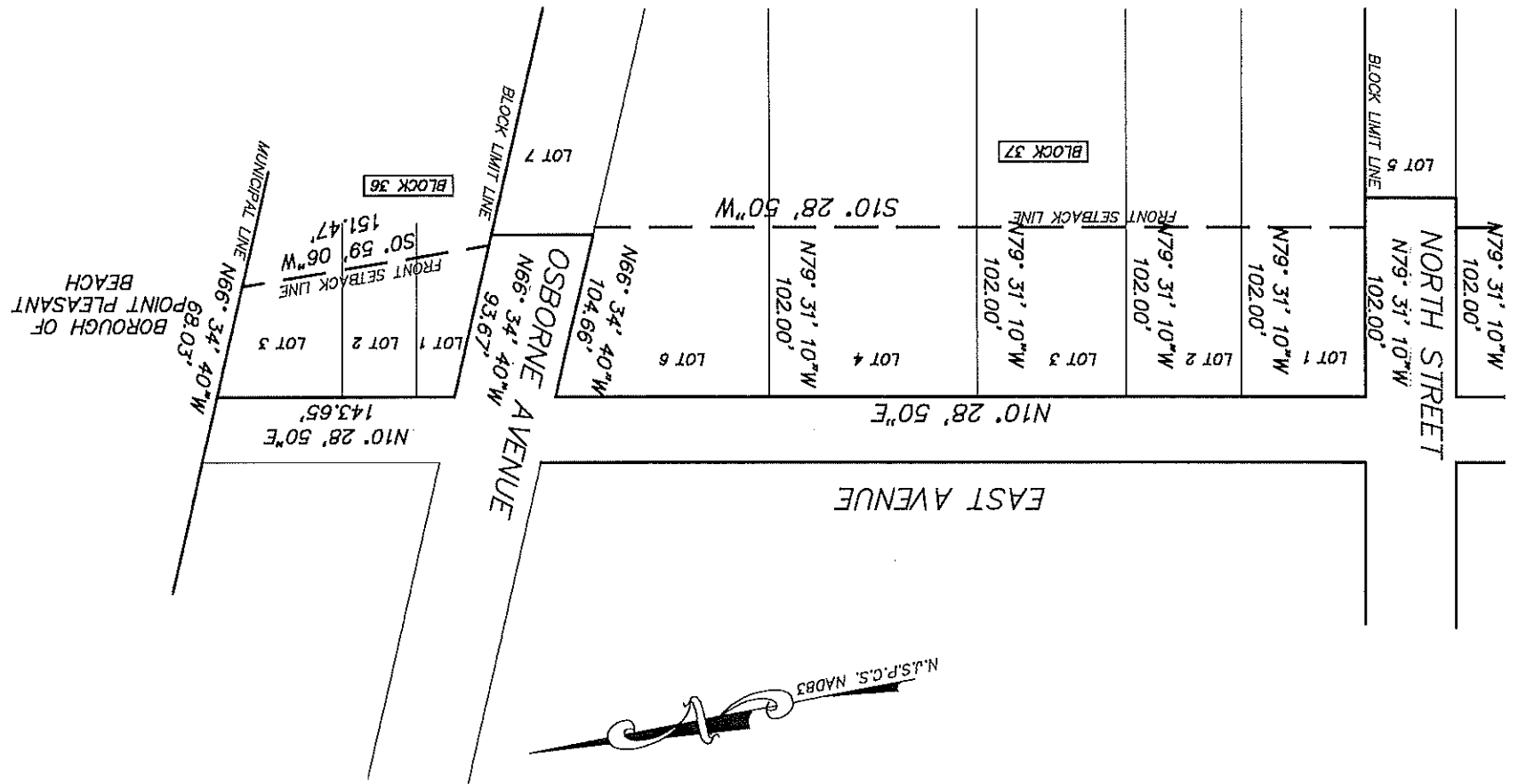


NO.	DATE	DESCRIPTION OF REVISION	BY	AUTH
1	6/29/20	REV. PER BAY HEAD COMMENTS	JDC	AUTH

CHECKED BY	WG
CALC. BY	JDC
DRAWN BY	JDC
SCALE	1"=100'
DATE	1/20/20
PROJECT NO.	19130.00
DWG NO.	8

BOROUGH OF BAY HEAD LAND USE  
 APPENDIX B  
 OCEANFRONT PROPERTIES - FRONT YARD SETBACK MAP



N.S.P.C.S. NAD83